



JOB NAME:	CONTRACTOR:
JOB LOCATION:	APPROVAL:
ENGINEER:	CONTRACTOR P.O.:
APPROVAL:	REPRESENTATIVE:

## DAN500S

**N500S RUBBER-LINED DIRECT MOUNT, WAFER STYLE BUTTERFLY VALVE WITH EPDM SEATS AND SS DISC WITH DOUBLE ACTING PNEUMATIC ACTUATOR**

**SIZES 1-1/2" TO 12"**

DA530S - FKM SEATS | DA540S - NBR SEATS

## SRN500S

**N500S RUBBER-LINED DIRECT MOUNT, WAFER STYLE BUTTERFLY VALVE WITH EPDM SEATS AND SS DISC WITH SPRING RETURN PNEUMATIC ACTUATOR**

**SIZES 1-1/2" TO 12"**

DA530S - FKM SEATS | DA540S - NBR SEATS

## SPECIFICATIONS

Bonomi North America series DAN500S/SRN500S feature the N500S, Direct mount ductile iron wafer style, epoxy coated, ANSI class 150, resilient seat butterfly valves in sizes 1-1/2"-12", with EPDM seat are NSF/ANSI 61/372 certified. The N500S has a stainless steel disc. This series shall offer a dual stem design and ISO 5211/DIN 3337 direct mounting for high cycle automation capabilities.

In addition, the N500S series features a dovetail boot-  
ed seat design which offers a 250 CWP maximum pressure rating, and conforms to ANSI B16.1.

The Valbia pneumatic actuator comes with a hard-anodized aluminum body, and powder coated end caps. In addition, all Valbia pneumatic actuators are standardly furnished with elevated temperature seals to 302F. The patented side loaded limit stops never enter the piston chamber eliminating extra possible leak paths.

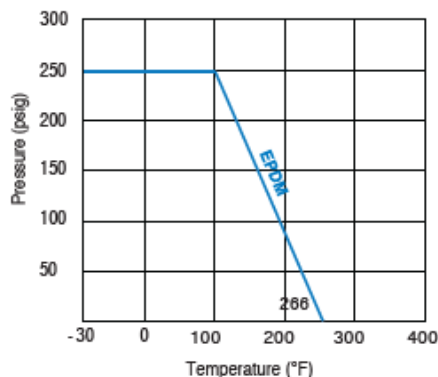
## ACTUATOR FEATURES

- Hard anodized extruded aluminum body
- Concentric spring sets
- Die cast aluminum end caps
- Solid steel barstock pinion (not casting)
- 0°-90° rotation adjustment cam
- 0°-90° rotation adjustment bolts
- POM piston guides
- Minimum air pressure rating: 80 psi
- Maximum air pressure rating: 116 psi
- Working temperature: -4°F - 302°F
- No lubrication maintenance required for the entire actuator lifetime
- 100% factory tested

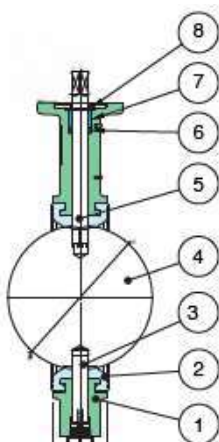
## VALVE FEATURES

- ISO 5211 Direct Mount/Square Stem
- Epoxy coated Ductile Iron Wafer body
- Food Grade EPDM resilient seat (-30°F TO 266°F)
- 530S - FKM seats (10°F TO 300°F)
- 540S - NBR seats (10°F TO 250°F)
- API609 face to face flange
- Floating dual shaft disc design
- MSS SP 67 compliant
- No pins in disc prevent potential leak points
- NSF/ANSI 61, 372 approved
- ANSI class 150

## PRESSURE - TEMPERATURE CHART FOR SERIES N500S

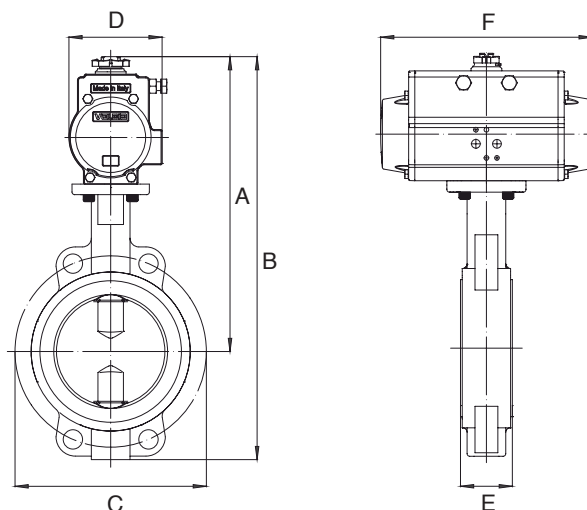


## BILL OF MATERIALS FOR N500S



N POS	PART NAME	MODEL	MATERIAL	N PCS
1	BODY		DUCTILE IRON	1
2	SEAT	N500S	EPDM (-30°F TO 266°F)	1
		530S	FKM (10°F TO 300°F)	
		540S	NBR (10°F TO 250°F)	
3	LOWER SHAFT		A430F	1
4	DISC		ASTM A351 CF8M (A316)	1
5	UPPER SHAFT		A430F	1
6	O-RING		NBR	1
7	BUSHING		SINT. BRONZE	1
8	STOP RING		SPRING STEEL	1
9	LEVER		ALUMINIUM	1

## DIMENSIONS



### DAN500S

N500S W/ **DOUBLE ACTING** ACTUATOR

Size	A	B	C	D	E	F	ACT. DA
1-1/2"	10.20	13.07	3.88	3.17	1.40	6.46	63
2"	10.51	13.66	4.74	3.17	1.81	6.46	63
2-1/2"	10.75	14.61	5.50	3.17	1.93	6.46	63
3"	11.30	15.55	6.00	3.17	1.93	6.46	63
4"	12.60	17.58	7.50	3.72	2.17	8.27	75
5"	13.11	18.57	8.50	3.72	2.32	8.27	75
6"	14.29	20.34	9.51	4.17	2.36	9.47	85
8"	17.58	24.94	11.75	5.39	2.56	13.11	115
10"	19.23	27.87	14.25	5.83	2.93	14.65	125
12"	21.28	30.98	17.00	6.46	3.32	17.13	140

### SRN500S

N500S W/ **SPRING RETURN** ACTUATOR

Size	A	B	C	D	E	F	ACT. SR
1-1/2"	10.91	13.78	3.88	3.72	1.40	8.27	75
2"	11.22	14.37	4.74	3.72	1.81	8.27	75
2-1/2"	11.46	15.32	5.50	3.72	1.93	8.27	75
3"	12.56	16.81	6.00	4.17	1.93	9.47	85
4"	13.65	18.63	7.50	4.84	2.17	10.83	100
5"	15.52	20.98	8.50	5.39	2.32	13.11	115
6"	16.63	22.68	9.51	5.83	2.36	14.65	125
8"	19.89	27.25	11.75	7.32	2.56	19.69	160
10"	22.32	30.96	14.25	8.38	2.93	19.41	180
12"	23.48	33.18	17.00	8.38	3.32	19.41	180