



|               |                  |
|---------------|------------------|
| JOB NAME:     | CONTRACTOR:      |
| JOB LOCATION: | APPROVAL:        |
| ENGINEER:     | CONTRACTOR P.O.: |
| APPROVAL:     | REPRESENTATIVE:  |

## MEN500S

**RUBBER-LINED DIRECT MOUNT, WAFER STYLE  
 BUTTERFLY VALVE WITH EPDM SEATS AND  
 STAINLESS STEEL DISC WITH VALBIA METAL  
 ELECTRIC ACTUATOR  
 SIZES 1-1/2" TO 12"**

**ME530S - FKM SEATS**

**ME540S - NBR SEATS**

|             |                |             |            |             |                             |
|-------------|----------------|-------------|------------|-------------|-----------------------------|
| <b>*001</b> | 12V AC/DC      | <b>*002</b> | 24V AC/DC  | <b>*003</b> | 100-240V AC                 |
| <b>*01*</b> | BATTERY BACKUP | <b>*02*</b> | POSITIONER | <b>*04*</b> | BATTERY BACKUP W POSITIONER |

### SPECIFICATIONS

Bonomi North America series MEN500S packages, include ductile iron, epoxy coated, wafer style, ANSI class 150, resilient EPDM seat butterfly valves in sizes 1 1/2"-12" are NSF/ANSI 61/372 certified.

This series shall offer a dual stem design and ISO 5211/DIN3337 direct mounting for high cycle automation capabilities.

In addition, the MEN500S series features a dovetail booted seat design which offers a 250CWP maximum pressure rating and conforms to ANSI B16.1 and ANSI B16.5

The MEN500S series also includes a rugged aluminum polyester powder coated metal housing NEMA 4 electric actuator, with standard features such as 2 extra limit switches, heater and thermostat, torque limiter, dual voltages, bubble type position indicator and a 75% duty cycle motor.

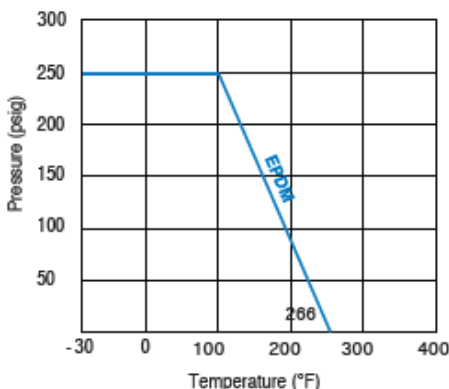
### ACTUATOR FEATURES

- Dual Voltages
- CSA, UL approved
- 24V AC/DC and 100-240V AC
- ISO 5211 dual patterns
- 75% Duty Cycle
- High-Strength, Die Cast Aluminum Powder Coated Housing
- Temperature Range -4°F to 131°F
- NEMA 4 Housing
- Two Auxiliary Switches Standard
- Torque limiter standard
- 1/2" Conduit connections

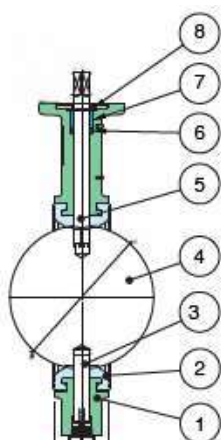
### VALVE FEATURES

- ISO 5211 Direct Mount/Square Stem
- Epoxy coated Ductile Iron Wafer body
- EPDM resilient seat (-30°F TO 266°F)
- 530S - FKM seats (10°F TO 300°F)
- 540S - NBR seats (10°F TO 250°F)
- API609 face to face flange
- Floating dual shaft disc design
- MSS SP 67 compliant
- No pins in disc prevent potential leak points
- NSF/ANSI 61, 372 approved
- ANSI class 150

### PRESSURE - TEMPERATURE CHART FOR SERIES N500S

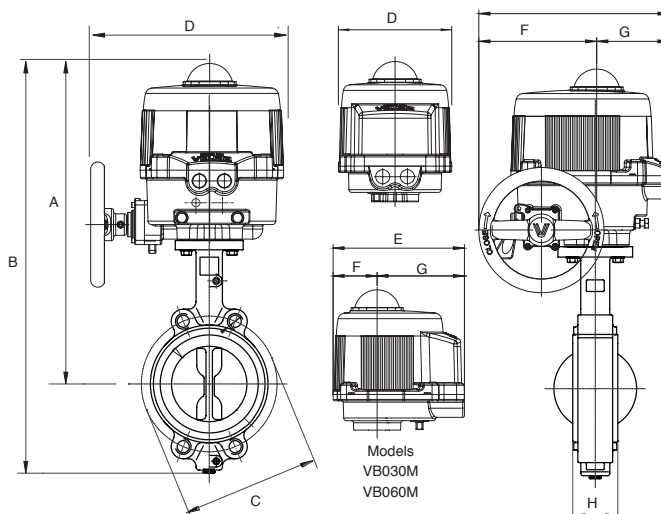


## BILL OF MATERIALS FOR N500S



| N POS | PART NAME   | MODEL | MATERIAL              | N PCS |
|-------|-------------|-------|-----------------------|-------|
| 1     | BODY        |       | DUCTILE IRON          | 1     |
| 2     | SEAT        | N500S | EPDM (-30°F TO 266°F) | 1     |
|       |             | 530S  | FKM (10°F TO 300°F)   |       |
|       |             | 540S  | NBR (10°F TO 250°F)   |       |
| 3     | LOWER SHAFT |       | A430F                 | 1     |
| 4     | DISC        |       | ASTM A351 CF8M (A316) | 1     |
| 5     | UPPER SHAFT |       | A430F                 | 1     |
| 6     | O-RING      |       | NBR                   | 1     |
| 7     | BUSHING     |       | SINT. BRONZE          | 1     |
| 8     | STOP RING   |       | SPRING STEEL          | 1     |
| 9     | LEVER       |       | ALUMINIUM             | 1     |

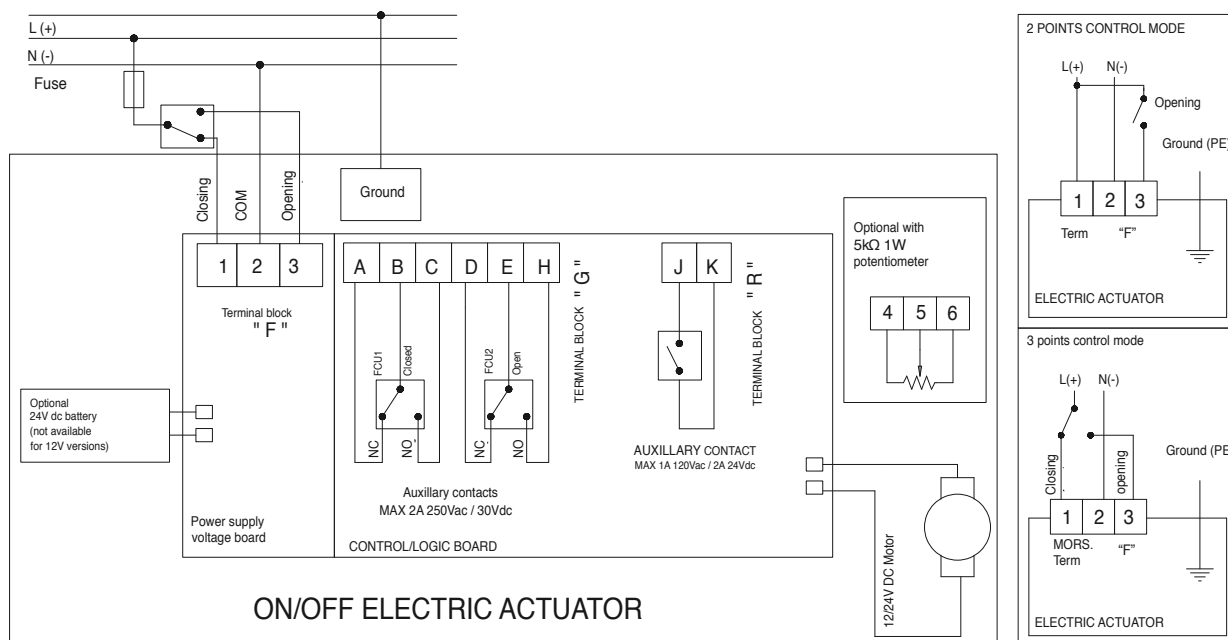
## DIMENSIONS



| Size   | A     | B     | C     | D     | E     | F    | G    | H    | Act.   |
|--------|-------|-------|-------|-------|-------|------|------|------|--------|
| 1-1/2" | 13.59 | 16.47 | 3.88  | 6.34  | 7.36  | 2.48 | 4.88 | 1.40 | VB030M |
| 2"     | 13.91 | 17.06 | 4.74  | 6.34  | 7.36  | 2.48 | 4.88 | 1.81 | VB030M |
| 2-1/2" | 14.14 | 18.00 | 5.50  | 6.34  | 7.36  | 2.48 | 4.88 | 1.93 | VB030M |
| 3"     | 14.69 | 18.95 | 6.00  | 6.93  | 7.76  | 2.48 | 5.28 | 1.93 | VB060M |
| 4"     | 16.08 | 21.06 | 7.50  | 6.93  | 7.76  | 2.48 | 5.28 | 2.17 | VB060M |
| 5"     | 18.13 | 23.32 | 8.50  | 10.63 | 10.47 | 6.50 | 3.98 | 2.32 | VB110M |
| 6"     | 18.81 | 24.85 | 9.51  | 10.63 | 10.47 | 6.50 | 3.98 | 2.36 | VB190M |
| 8"     | 19.73 | 27.09 | 11.75 | 10.83 | 10.98 | 7.24 | 3.74 | 2.56 | VB270M |
| 10"    | 20.91 | 29.55 | 14.25 | 10.83 | 10.98 | 7.24 | 3.74 | 2.93 | VB350M |
| 12"    | 22.09 | 31.80 | 17.00 | 10.83 | 10.98 | 7.24 | 3.74 | 3.32 | VB350M |

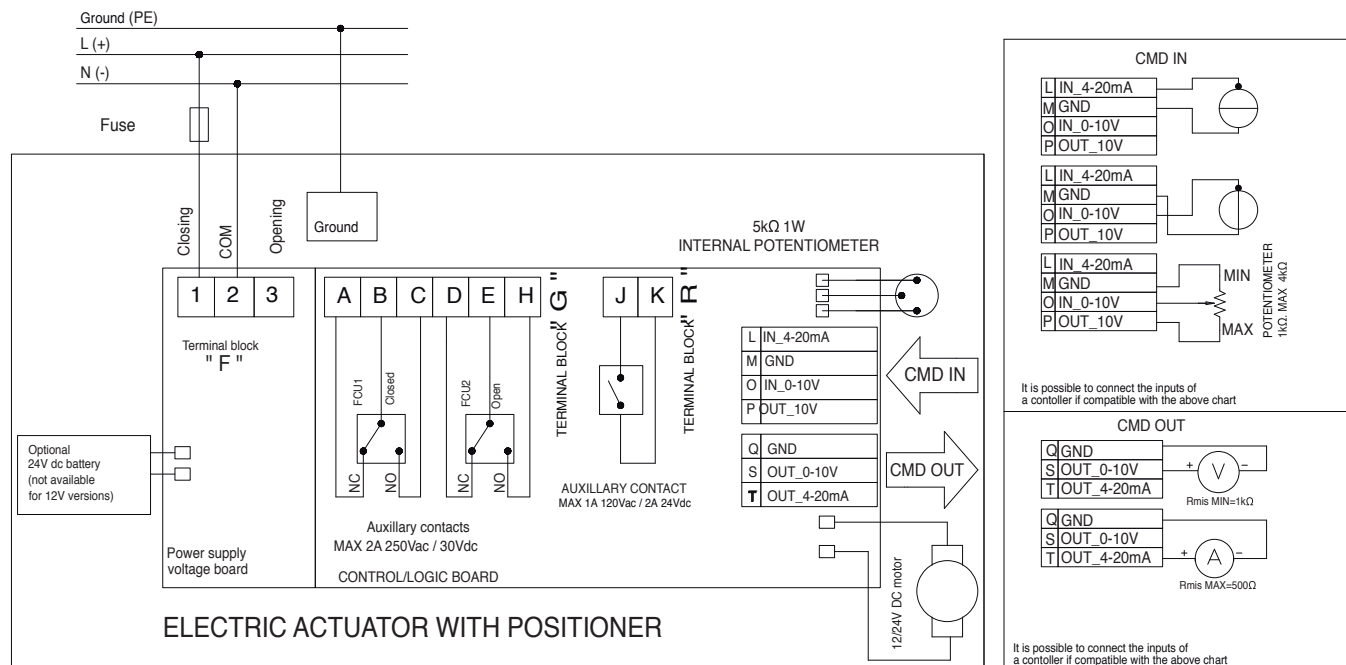
# ON/OFF WIRING DIAGRAM - VB030M -VB350M

12V AC/DC, 24V AC/DC &amp; 100-240VAC



# POSITIONER WIRING DIAGRAM - VB030M -VB350M

12V AC/DC, 24V AC/DC &amp; 100-240VAC



The power supply COM signal ( pin "2" terminal block "F") cannot share the same electrical command ground signal ( pin "GND" terminal block "CDM IN") or feedback ground signal (pin "GND" terminal block "CDM OUT").