



JOB NAME:	CONTRACTOR:
JOB LOCATION:	APPROVAL:
ENGINEER:	CONTRACTOR P.O.:
APPROVAL:	REPRESENTATIVE:

8E0740H-00* - 8E0741H-00* - 8E0742H-00*
FNPT THREADED SOCKET WELD BUTT WELD

740LL FULL PORT, HIGH PRESSURE DIRECT MOUNT 2-WAY, 3-PIECE STAINLESS STEEL WITH ENCAPSULATED BOLTS BALL VALVE IN NPT, SW OR BUTT WELD W/VALBIA ELECTRIC ACTUATOR

SIZES 1/4" TO 1"

*001 12V AC/DC	*002 24V AC/DC	*003 100-240V AC
01 BATTERY BACKUP	*02* POSITIONER	*04* BATTERY BACKUP W POSITIONER

SPECIFICATIONS

The 8E0740H/8E0741H/8E0742H series electric packages feature a stainless steel high performance three-piece full port, encapsulated bolt style, to 3600 psi ball valves. The valve also incorporates an ISO 5211 direct mount pad with square stem. Further, the valve has high temperature PEEK seats, conforms to ANSI 16.34, ANSI B1.20.1 Thread depths, and NACE MRO 175. The Valbia VB electric actuator features a NEMA 4, 4X housing, two extra limit switches, dual voltage motors, a heater and thermostat, torque limiter, special manual override, and a 75% duty cycle motor. PG11 connections are standard, with optional 1/2" conduit.

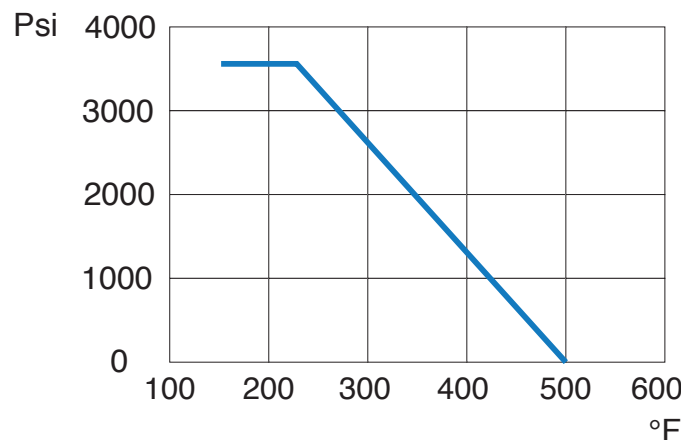
ACTUATOR FEATURES

- NEMA 4, 4X Housing
- 12V/24V AC/DC and 100-240V AC Models Available
- ISO 5211 dual patterns
- VB015 -12/24V AC - 50% Duty Cycle
- VB030-VB110 - 12/24V DC and 100-240V AC - 75% Duty Cycle
- High-Strength, Impact Resistant IP67 Technopolymer Housing
- Temperature Range -4°F to 131°F
- PG11 Electrical Connection/Optional 1/2" conduit connection

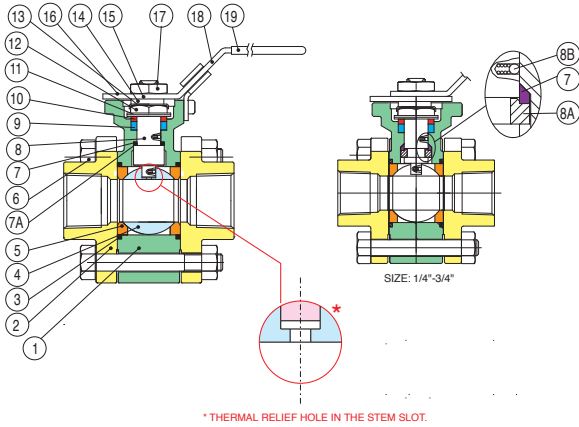
VALVE FEATURES

- Sizes 1/4" to 1"
- High pressure to 3600 psi
- High temperature to 500°F max
- Direct mounting to ISO 5211/square stem
- PEEK seats
- Standard latch locking handle
- Conforms to ANSI B16.34, ANSI B1.20.1 thread depths, NACE MR0175

PRESSURE - TEMPERATURE CHART FOR SERIES 740H/741H/742H



BILL OF MATERIALS FOR 740H / 741H / 742H

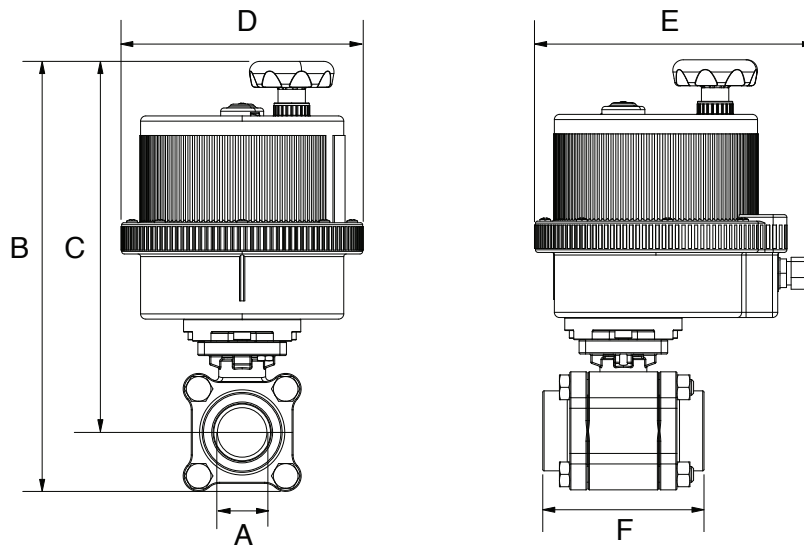


N POS	PART NAME	MATERIAL	N POS
1	BODY	CF8M	1
2	END CAP	CF8M	2
3	GASKET BODY	TFM	2
4	BALL	SS316	1
5	BALL SEATS	PEEK	2
6	BOLTS	SS304	*
7	THRUST WASHER	TFM	1
7A	THRUST WASHER	PEEK	1
8	STEM	SS316	1
8A	HALF SPLIT RING	SS316	1
8B	ANTI-STATIC	SS316	2

N POS	PART NAME	MATERIAL	N POS
9	STEM PACKING	TFM	1
10	GLAND WASHER	SS304	1
11	DISK WASHER	SS301	1
12	STEM NUT	SS304	1
13	NUT STOP	SS304	1
14	SPACE WASHER	SS304	1
15	PLATER	SS304	1
16	STOP IN	SS304	1
17	HANDLE NUT	SS304	1
18	HANDLE	SS304	1
19	HANDLE COVER	PLASTISOL	1

*VARIES WITH SIZE

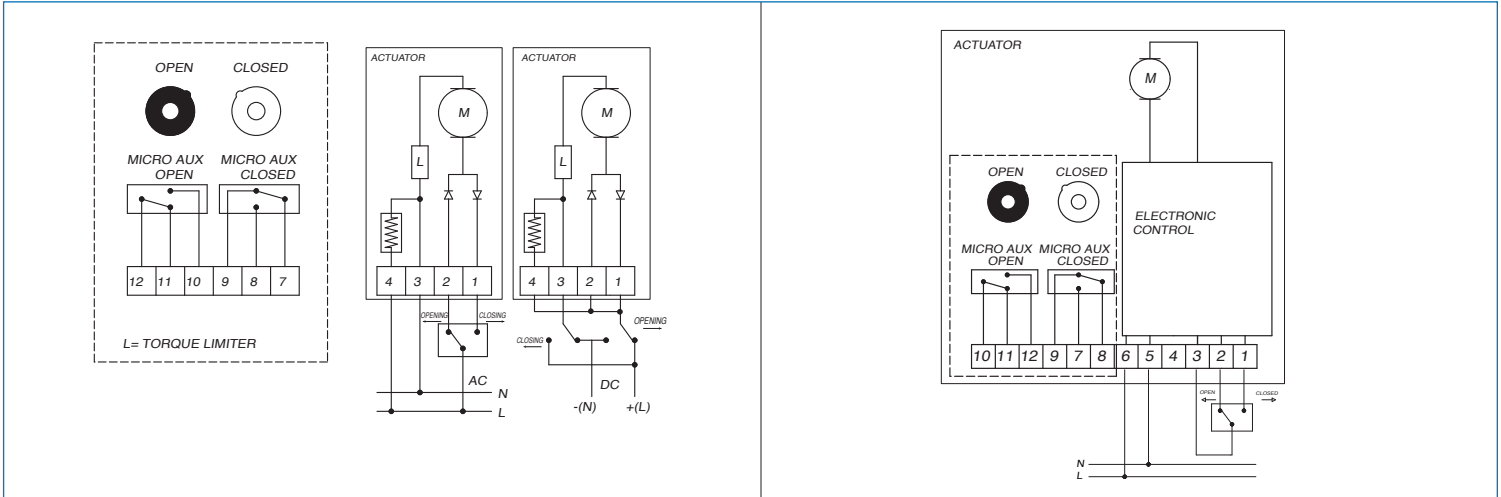
DIMENSIONS



Size	A	B	C	D	E	F	ACT.
1/4"	0.25	8.38	7.38	4.84	6.41	2.62	VB015
3/8"	0.38	8.38	7.38	4.84	6.41	2.62	VB015
1/2"	0.50	8.50	7.46	4.84	6.41	2.76	VB015
3/4"	0.75	10.64	9.49	6.18	7.48	3.62	VB030
1"	1.00	11.00	9.72	6.18	7.48	4.14	VB030

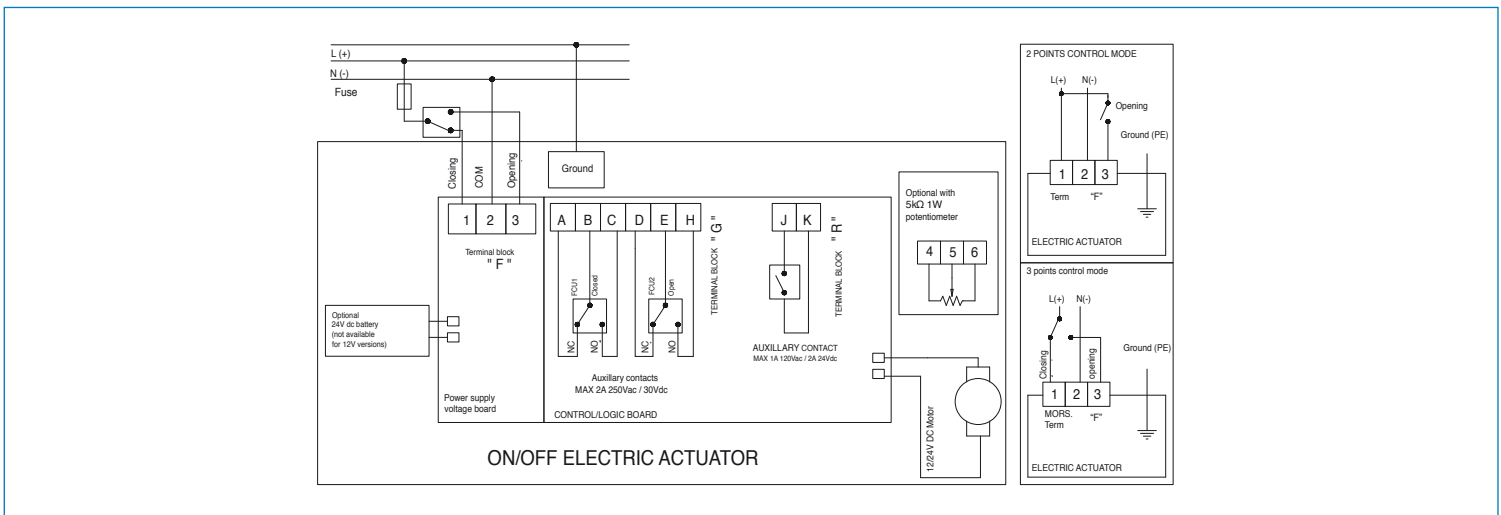
ON/OFF WIRING DIAGRAM - VB015

12V AC/DC, 24V AC/DC & 100-240VAC



ON/OFF WIRING DIAGRAM - VB030

12V AC/DC, 24V AC/DC & 100-240VAC



POSITIONER WIRING DIAGRAM - VB030

12V AC/DC, 24V AC/DC & 100-240VAC

