

JOB NAME:	CONTRACTOR:
JOB LOCATION:	APPROVAL:
ENGINEER:	CONTRACTOR P.O.:
APPROVAL:	REPRESENTATIVE:

DA511SL

FULL PORT SAFETY EXHAUST STAINLESS STEEL BALL VALVE WITH NPT ENDS W/ DOUBLE ACTING ACTUATOR

SIZES 1/2" TO 3/4"

SR511SL

FULL PORT SAFETY EXHAUST STAINLESS STEEL BALL VALVE WITH NPT ENDS W/ SPRING RETURN ACTUATOR

SIZES 1/2" TO 3/4"

SPECIFICATIONS

The DA511SL [double acting] and the SR511SL [spring return] series pneumatic assembly features a stainless steel safety exhaust ball valve with a 1/4" NPT exhaust port that can be easily piped to a drain for safety. The valve when the handle is turned to the off position, it is designed to release air downstream to avoid air pressure build up to a tool or similar device. A stainless-steel muffler, series SSBM-2, can be added to reduce the noise level of the exhaust port.

The Valbia pneumatic actuator comes with a hard-anodized aluminum body, and powder coated end caps. In addition, all Valbia pneumatic actuators are standardly furnished with elevated temperature seals to 302F. The patented side loaded limit stops never enter the piston chamber eliminating extra possible leak paths.

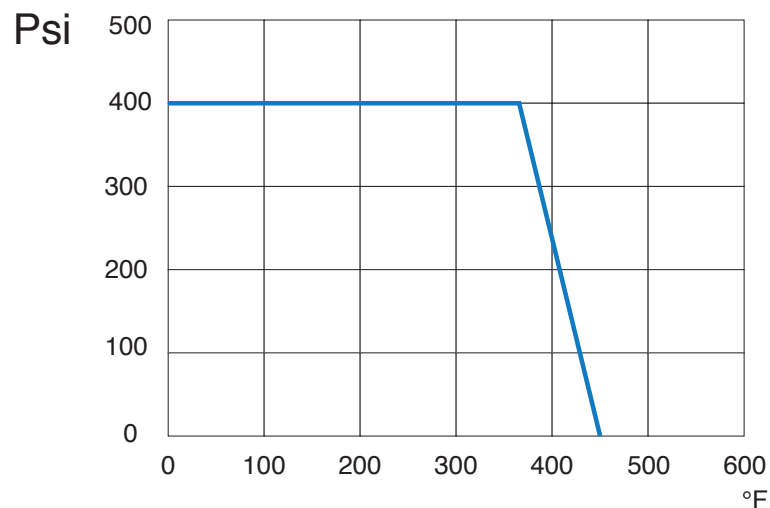
ACTUATOR FEATURES

- Hard anodized extruded aluminum body
- Concentric spring sets
- Die cast aluminum end caps
- Solid steel barstock pinion (not casting)
- 0°-90° rotation adjustment cam
- 0°-90° rotation adjustment bolts
- POM piston guides
- Minimum air pressure rating: 80 psi
- Maximum air pressure rating: 116 psi
- Working temperature: -4°F - 302°F
- No lubrication maintenance required for the entire actuator lifetime
- 100% factory tested

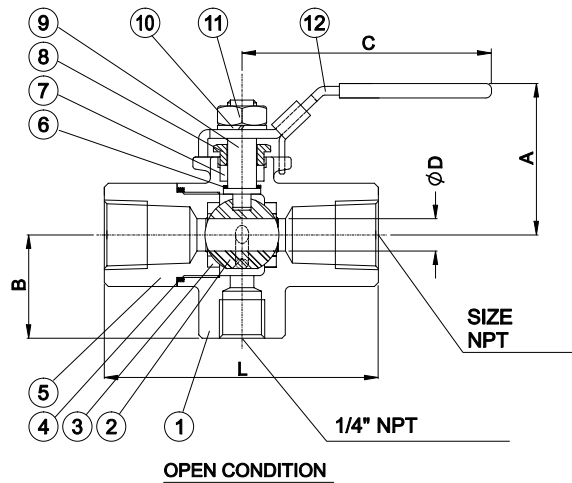
VALVE FEATURES

- Full Port, sizes 1/2" to 3/4"
- Working pressure - 400 psi air service
- Temperature range: -20°F to 450°F
- CF8M body
- ANSI B1.20.1 thread depths
- Blow-out proof stem design
- Locking lever standard (Optional oval handle)
- TFM 4215 seats
- 100% air tested under water at 80 psi

PRESSURE - TEMPERATURE CHART FOR SERIES 511SL

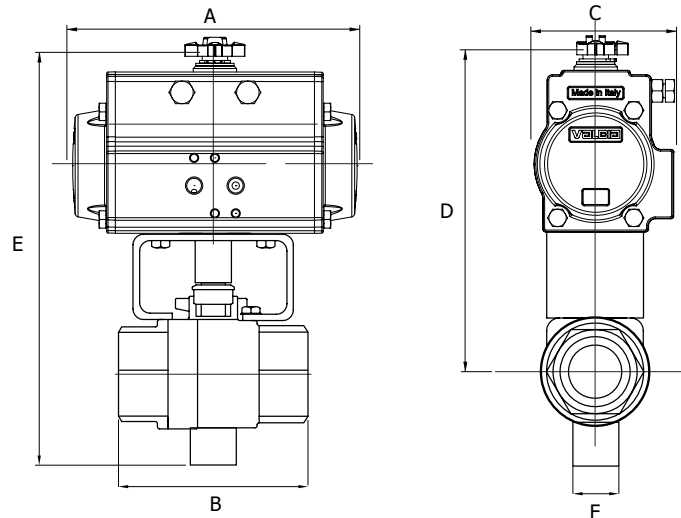


BILL OF MATERIALS FOR 511SL



N POS	PART NAME	MATERIAL	N PCS
1	BODY	CF8M	1
2	BALL	SS 316	1
3	SEAT	TFM 4215 / PEEK	2
4	GASKET	GRAPHITE	1
5	END CAP	CF8M	1
6	THRUST WASHER	TFM 4215 / PEEK	1
7	STEM PACKING	GRAPHITE	1
8	GLAND	SS 304	1
9	STEM	SS 316	1
10	DISC WASHER	SS 301	1
11	HANDLE NUT	SS 304	1
12	HANDLE	SS 304	1
13	SLEEVE	PLASTIC	1

DIMENSIONS



DA511SL

511SL W/ **DOUBLE ACTING** ACTUATOR

Size	A	B	C	D	E	F	ACT. DA
1/2"	5.55	2.78	2.80	5.33	7.35	0.875	52
3/4"	5.55	2.93	2.80	5.48	7.50	0.875	52

SR511SL

511SL W/ **SPRING RETURN** ACTUATOR

Size	A	B	C	D	E	F	ACT. SR
1/2"	6.46	2.78	3.17	6.43	7.80	0.875	63
3/4"	6.46	2.93	3.17	6.58	7.95	0.875	63